

Boston Barrier Scheme Update – April 2019

Once built, the multi-million pound Boston Barrier will better protect over 14,000 properties against tidal flooding in the area.



Work in the river

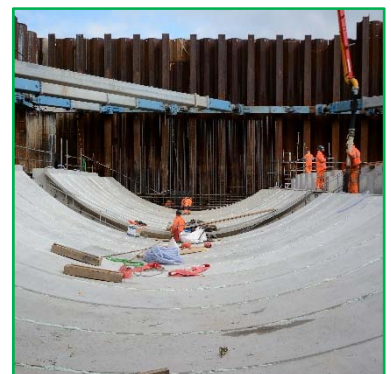
The cofferdam which provides a watertight space for construction work to take place has been drained of water and excavated so that steel reinforcement cages could be lifted into place for the concrete pours.

Five concrete pours have now taken place on site— over 1,500m³ has been poured so far with another ten pours currently scheduled to take place over coming months.

22 precast recess beams weighing 20 tonnes each, have now been placed and pushed into position. These precast units will form a recess where, once in place, the barrier will stay in its lowered position on the bed of the river.

The supply chain is being used to fabricate materials off site as much as possible which provides a better working environment for the team and ensures the high accuracy required in the steelwork, reinforcement cages and pre-cast concrete whilst they are made.

The barrier gate has now been fabricated in the Netherlands by our suppliers Hollandia and is now in the paint workshop. It is due to be delivered by barge in late summer.



Work at the Port

The outer shell of the Barrier control building is now complete, and the scaffolding has now been removed. Windows have been installed and the mechanical and electrical first fix has started. Around the building the team have now installed drainage, and are preparing the car park area.

A standby generator to power both the building and the barrier has been manufactured offsite, and will act as a backup to the mains supply in case of power cuts. This will ensure that the Boston Barrier can always be operated under any circumstances in the future.



Site Visit Day

Over 120 people attended the project's Open Day on Sunday 28th April. A steady stream of interested individuals came throughout the day and enjoyed the chance to peek into the cofferdam and see the latest progress including the recess panels and concrete work.

If you are interested in finding out more about the Boston Barrier we can arrange presentations to groups, and talks for schools and clubs.

For more information please email Boston.Barrier@environment-agency.gov.uk

Important reminder during school holiday periods

We ask parents to remind children that although construction sites look like exciting places to explore, they are dangerous and not play areas. There is a safe public viewing platform on London Road, opposite the Black Sluice Pumping Station.

Keep up to date

If you have any concerns about the works, Gordon Hounslow can be contacted on 07939 474 682 or alternatively send an email to Gordon.Hounslow@bamnutall.co.uk

The Boston Barrier Hub on Marsh Lane is open every Wednesday from 12-7pm if you have any questions about the scheme.

Email: Boston.Barrier@environment-agency.gov.uk

Facebook: www.facebook.com/BostonBarrier

Twitter/Instagram: @BostonBarrierEA

BMM JV Project blog: wordpress.com/bostonbarrier

